

OVERFLY
Design Marc Sadler

Registered Design

LAMPADE CHE SEMBRANO
FLUTTUARE NELL'ARIA
LAMPS FLOATING IN THE AIR



INCISIONI GODRONATE
FORME CURVE E RAFFINATE
LUCE POTENTE

CRISS-CROSS KNURLED DETAILS
CURVED AND REFINED SHAPES
POWERFUL LIGHT

Overfly è una lampada a sospensione leggera ed elegante.

La lavorazione godronata incrociata impreziosisce e riveste tutto il perimetro del disco inferiore creando raffinati riflessi di luce.

La stessa lavorazione viene richiamata anche nel piccolo cilindro superiore, disponibile in tinta 'ton sur ton' o con colorazione a contrasto.

Overfly is an elegant suspension lamp.

The criss-cross knurled engravings embellish and cover the entire perimeter of the lower disc, creating refined reflections of light.

The same processing is also recalled in the small upper cylinder, available in a 'ton sur ton' color or with a contrasting nuance.

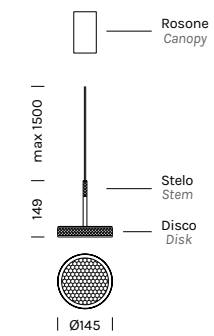
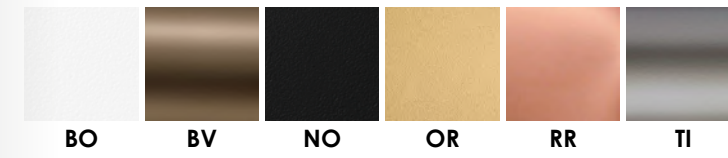




OVERFLY

Alluminio, plexiglass
Fascio di luce verso il basso

Aluminium, plexiglass
Light beam: downward-projected



OVERFLY PLUS

Design Marc Sadler

Registered Design



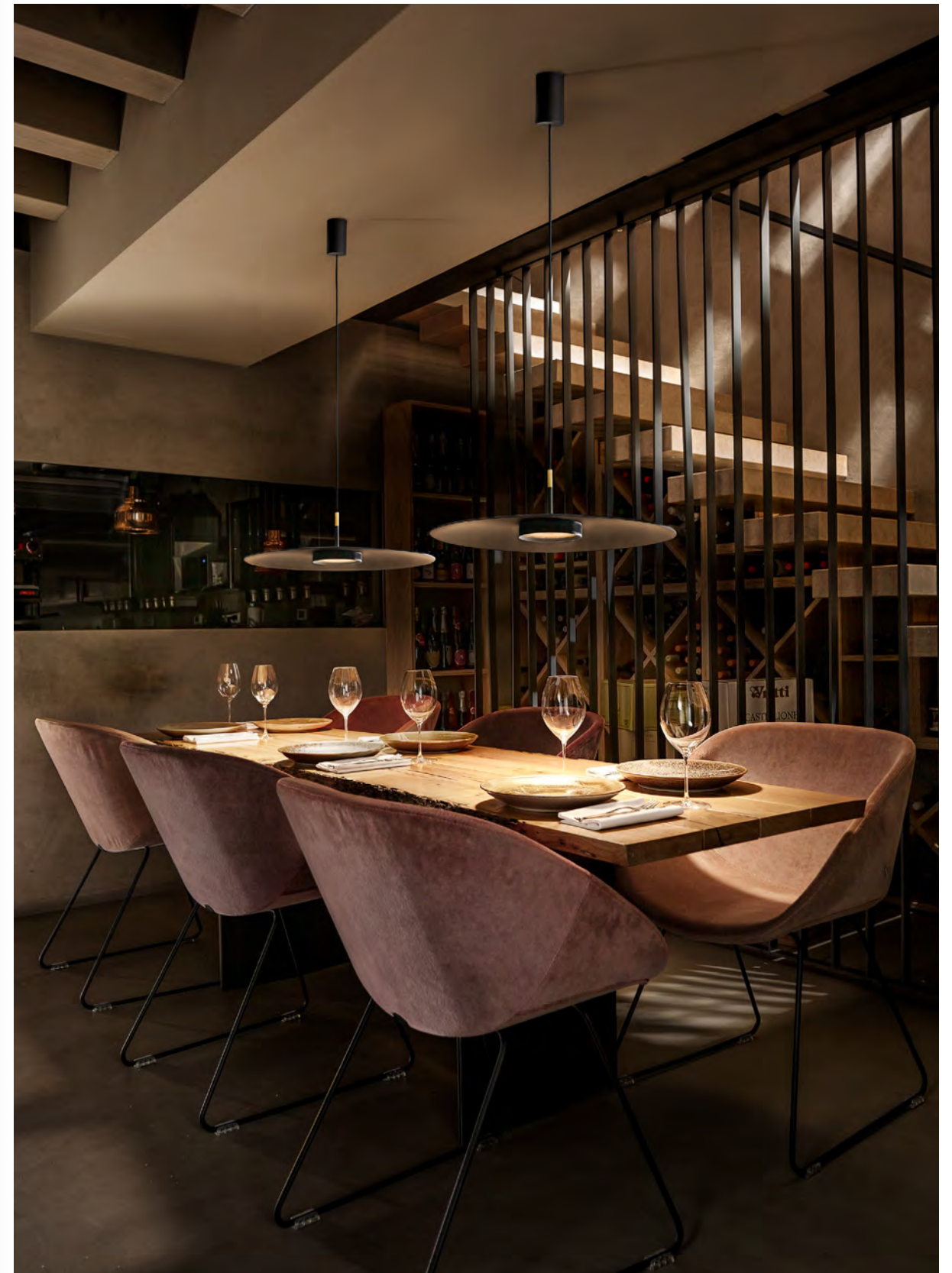
La sua presenza scenica delicata ed estremamente raffinata è impreziosita dalle incisioni godronate incrociate che rivestono tutto il perimetro del disco inferiore.

Its delicate and extremely refined stage presence is embellished by criss-cross knurled incisions that cover the entire perimeter of the lower disc.



È ideale per illuminare un tavolo da pranzo, grazie alla luce diretta verso il basso resa confortevole dal filtro a nido d'ape.

It is ideal for illuminating a dining table, thanks to the direct downward light made comfortable by the honeycomb filter.

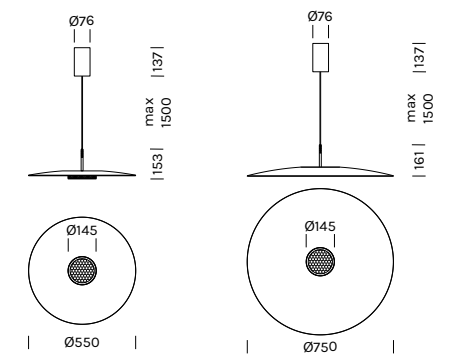




OVERFLY PLUS

Alluminio, plexiglass
Fascio di luce verso il basso

Aluminium, plexiglass
Light beam: downward-projected

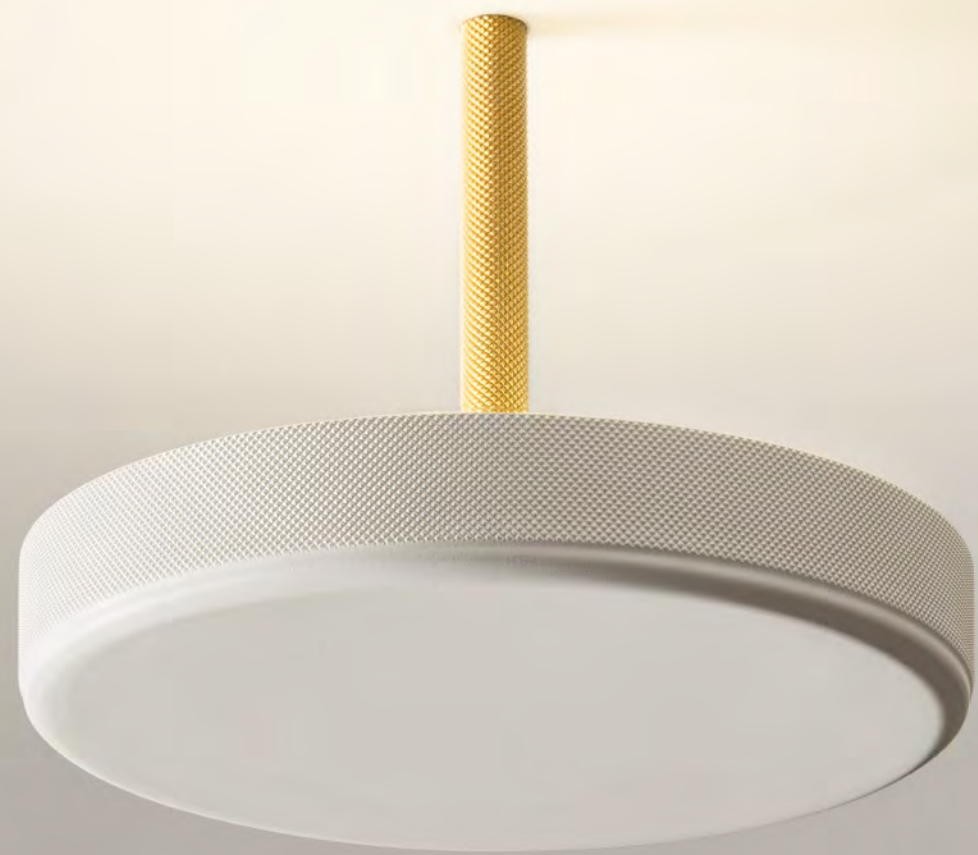


OVERFLY PLUS PL

Design Marc Sadler

Registered Design

SOFFITTO - CEILING

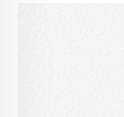




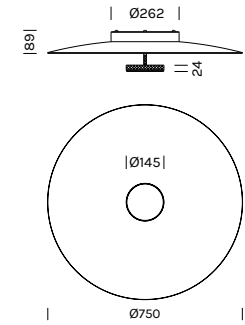
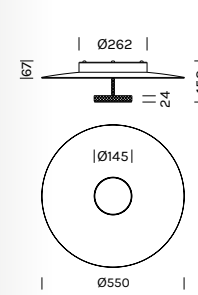
OVERFLY PLUS PL

Alluminio, plexiglass
Fascio verso l'alto

Aluminium, plexiglass
Light beam: upward-projected



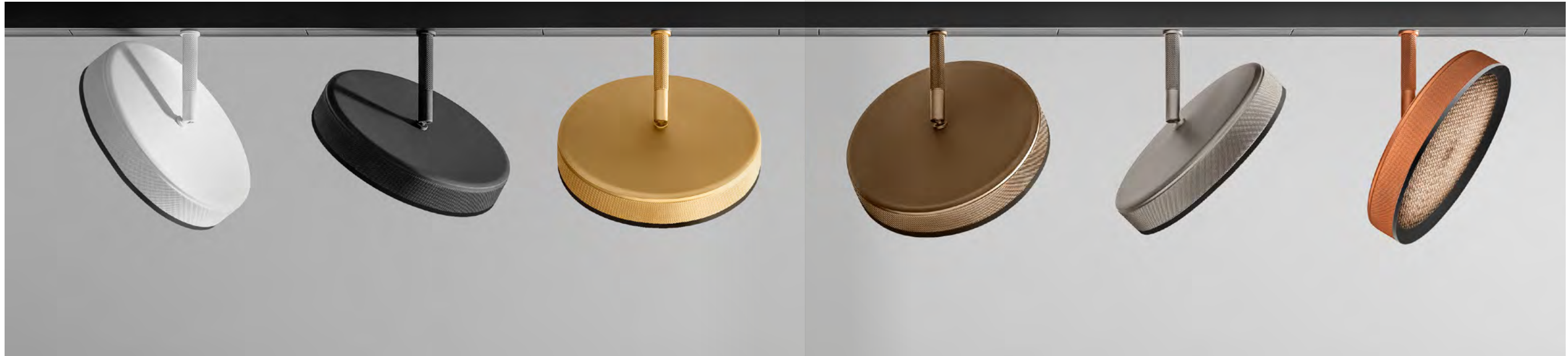
BO



OVERFLY TRACK 48V

Design Marc Sadler

Registered Design



Alluminio, plexiglass
Fascio di luce verso il basso

Aluminium, plexiglass
Light beam: downward-projected

